

---

INSTRUCTION MANUAL  
**AEROBASE 3 PRO**

---



# AEROBASE 3 PRO

AIR SHELTER



## KEY TIPS



WITHOUT DELUXE WALL



WITH DELUXE WALL



Before inflating your shelter, start by pegging each corner so that all webbing straps are taut and the shelter sits square.



The Deluxe Wall panels can be opened to create doorways and help retain privacy. Unzip the wall panels 1/3rd and roll towards the toggles then fasten.



Ensure your air tubes are inflated to the correct pressure by using the pressure release valve on the pump.



If you experience heavy rain or morning dew, flick the inside of the Deluxe Wall a few times to remove water from the mesh panel before opening the cover.



If you experience loss in air pressure, check the valve is firmly screwed in is not cross-threaded and the valve cap is tight. Also make sure the valve flap is not obstructed.



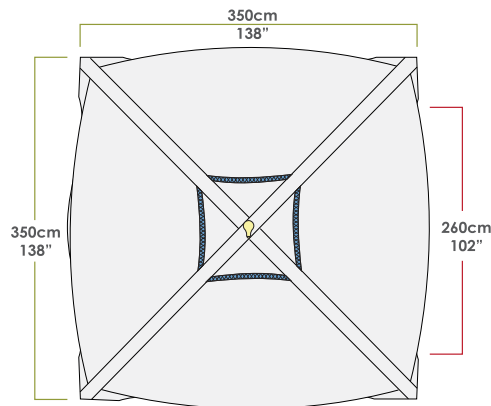
Before deflating, connect the webbing straps to the air tubes to make the next set-up easier.



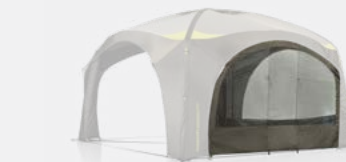
Do not over tension guy ropes as your shelter is designed to be free standing without the need for these. The guy ropes should be taut but shouldn't pull your shelter out of shape.



Always dry your shelter before storing away. Mold can start to form within days if left wet in the bag.

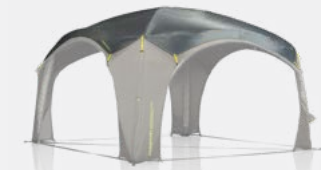


- External Dimensions
- Door Width
- Mesh Vent
- Lantern Hanging Point



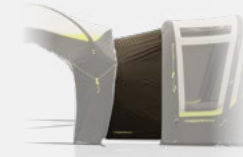
### AEROBASE 3 PRO DELUXE WALL

Additional zip-on wall for the Aerobase 3 Pro Shelter. Use another single wall for additional shade, as a windbreak or add multiple walls to fully enclose your shelter.



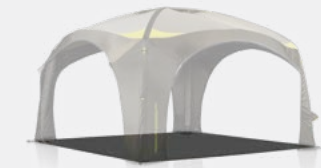
### AEROBASE 3 ROOF COVER

Helps reduce internal temperature and keeps the inside of your shelter darker. Also protects your roof from pollen, tree sap and other debris.



### LINKS AND CONNECTORS

Link your shelter to your tent for the ultimate palatial set-up or connect two shelters to create one large covered space.



### AEROBASE 3 MESH GROUND SHEET

Designed to fit perfectly inside your shelter. Made from woven PE duramesh for drainage with corner grommets to keep the floor secure.



OPTIONAL ADDONS

# PITCHING INSTRUCTIONS

## 1. Test Run

Practice pitching your shelter at home to ensure you understand the process.

## 2. Pick A Site

When picking a site for your shelter, try to find an area that is sheltered, flat and free from sharp objects. Try not to pitch your shelter under trees as falling branches and sap can damage the shelter.

## 3. Unpacking

When you take your shelter out for the first time, take a moment to see how it is packed or take a photo on your phone. This will help you when it comes to packing your shelter away. Separate and identify the different parts. The package should include the following:

- Shelter
- Zip-on Deluxe Wall
- 4 x fiberglass brow poles
- Pump
- Pressure gauge
- Pump pressure release valve
- 4 x Sand Pegs
- 18 x Dome Pegs 6mm
- Guy Ropes (pre-attached)
- Repair kit

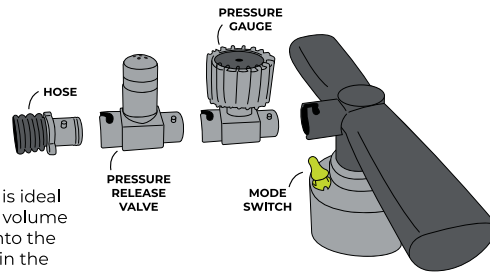
## 4. Pole Setup

Assemble the 4 fiberglass poles. The sections are joined together with shock cord, so they just need slotting together. Ensure that the poles do not snap together. It is important that the poles are fully inserted into the ferrules. If not connected correctly, they can cause damage when tensioned.

## 5. Pump Setup

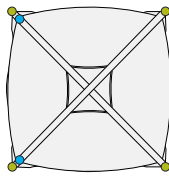
Your ZEMPIRE® Pro Series Pump included with your shelter comes with a pressure gauge and pressure release valve to ensure that the air tubes are inflated to the correct level.

The pump switches between two modes. Double action mode allows you to add high volume at low pressure and is ideal for the first half of inflation. Single action mode offers low volume at high pressure and enables you to get the last few PSI into the tubes easily. The pump accessories should be assembled in the shown configuration.



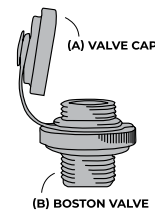
## 6. Layout

Unroll the shelter and ensure that all webbing guide straps are connected to the steel "O" rings in each corner. There should be 5 webbing straps in total, one for each side of the shelter and one additional length running diagonally across the center. Peg each corner (●) so that all webbing straps are taught and the shelter sits square. It is important that the shelter is not skewed, as this will make attaching the walls difficult and could affect stability. Ideally the pegs should be angled away from your tent at 45°.



## 7. Boston Valve

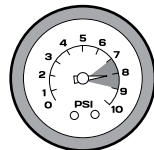
The external inflation valves are located under the rain socks on two corners (●) of the shelter. Before inflating, remove the valve cap (A) and screw the boston valves (B) into the threaded section attached to the tubes. It is important that the valve is not cross threaded and is firmly tightened. Make sure no fabric is stuck in the valve, as this will cause air to leak.



## 8. Inflation

Inflate the main cross tube to 7-9 PSI. The pressure release valve will "hiss" when 9 PSI is reached. It is important not to over-inflate the tubes. It is recommended that during very hot weather, 7 PSI is used to provide room for expansion during the day. In cooler or windier conditions, 9 PSI is recommended.

As the tube inflates, it may be necessary to support the center of the shelter until it assumes its correct shape.



## 9. Brow Poles

Insert the end of one fiberglass pole into the small black webbing pocket found halfway up the side of each entrance. Allow the pole to bow downwards and insert the other end of the pole into the pocket on the opposite side of the shelter. Lift the pole upwards so that it aligns with the seam above the entrance. Secure the pole using the velcro tabs. Repeat with the 3 remaining poles. Note that the poles should cross over one another as pictured.



## 10. Pegging

Peg the remaining peg loops on either side of each entrance. The wall panels should sit at right angles to each other following the line of the webbing guide straps. Durable steel pegs are included with your shelter, which will be suitable for the majority of conditions. However, if you are in a rocky or loose sandy location it may pay to purchase more specialized pegs. A range of specialised ZEMPIRE® Pegs may be available in your local region or on our website.

## 11. Webbing Straps

Now that the shelter is fully erected, the webbing guide straps can be detached from one end and folded into the mesh pocket found at the sewn end. This prevents them from becoming a tripping hazard. The straps are not completely detachable to ensure they do not get misplaced. It is important to reconnect these webbing straps before deflating your shelter.

## 12. Anchor Guy Ropes

The anchor guy ropes attached at each corner should be used at all times. It is important not to over-tighten the guy ropes. They should sit taught but should not distort the shape of the shelter. 4 yellow sand pegs are included with your shelter and can be used for the anchor guys in softer or sandy ground.

## 13. Zip-on Deluxe Wall

Your shelter includes one zip-on Deluxe Wall. When attaching the wall, it may be necessary to re-peg the corners to ensure the wall is not over tensioned. Too much tension can damage the zips. It may also be helpful to leave the wall attached when packing the shelter to ensure the correct tension is applied when setting up next time. The wall zipper has twin zip pullers to allow either side of the wall to be rolled back as a door.

## 14. Deflation

- Remove the fiberglass brow poles from each side of the shelter and place them in the pole bag.
- Unpeg all guy ropes and roll up to ensure they do not get tangled during packing.
- Unpeg the peg points excluding the 4 corners. Clean and dry the pegs before storing in the supplied peg bag.
- Unscrew each of the boston valves on the air frame (this may be quite loud). Wait for all the air to be expelled.
- Unpeg the 4 corners of the shelter, clean and pack the pegs.
- Turn the shelter upside down and fold so the open valve legs are on one side of the shelter with the "non-valve side" legs stretched out on the opposite side.
- Lay the carry bag at the "valve end" of the shelter. Fold the shelter to 2/3s of the length of the bag.
- Place the pump, peg bag and awning poles on top of the folded shelter at the end opposite the valve.
- Now roll the shelter from the "non-valve side" legs toward the valves to expel any remaining air.
- Use the supplied webbing straps (x2) to secure the rolled shelter and tension it so that it is firmly packed.
- Place the rolled shelter in carry bag, zip closed and tension the compression straps.

## UV Degradation

Shelter fabrics can be weakened by prolonged exposure to sunlight. Under normal holiday use, your ZEMPIRE® Shelter will give you many years of camping enjoyment. However, extended use in strong sunlight will cause degradation. It is recommended that during periods of strong sunlight a ZEMPIRE® Roof Cover is used to help protect from UV damage. UV degradation is not covered under warranty. The warranty does not cover permanent sites, displays or commercial use.

For a detailed description of all the features and specifications please visit our website.

## CARE INSTRUCTIONS

1. Ensure guy ropes are out at all times during use.
2. Never pack your shelter away wet. If you must take your shelter down when wet, ensure that it is dried completely as soon as possible to prevent mildew forming.
3. If mildew does form on your shelter, wash off with warm water and a soft brush to prevent further growth. Do not use soap or detergents.
4. Do not use aerosol spray cans or an open flame inside your shelter. The fabric has been treated with a fire retardant but is in no way fire-proof.
5. Always use a peg puller to remove pegs. Never remove pegs by pulling the shelter or peg loops; always clean and dry pegs before storing.
6. This shelter is not designed to withstand storm conditions. During a severe storm, it is recommended that the shelter be taken down.
7. Do not leave your shelter pitched unnecessarily for extended periods of time. UV light damages the fly and will shorten the life of your shelter.

## NEED HELP WITH YOUR SHELTER?

***We have a range of videos on our website which can help you.***

Follow the QR code or type the link below in your browser. We suggest to check out our videos beforehand in case you don't have service at your holiday destination.

**TO THE  
VIDEO  
GALLERY**



[ZEMPIRECAMPING.INFO/VIDEO-GALLERY](http://ZEMPIRECAMPING.INFO/VIDEO-GALLERY)

## 2 Year Limited Warranty

***Please take time to read about the protection we offer you.***

All our products come with a guarantee designed to protect you as our valued customer. ZEMPIRE® Camping Equipment will repair or replace this product, at their discretion, should it fail due to faulty materials or manufacture for a period of 2 years from the date of purchase.

The Guarantee is subject to the following conditions:

1. The Guarantee only applies to an original purchaser who purchased this product in an unopened condition from an approved retail outlet.
2. The Guarantee does not apply if the product has been used for anything other than reasonable personal use. Commercial use (e.g. rental) or continuous use are expressly excluded.
3. Damage due to normal wear and tear, accident, acts of God, negligence (other than by ZEMPIRE® Camping Equipment), failure by the purchaser to ensure instructions for setting up and care are observed, deterioration due to abnormal exposure to ultraviolet light, insect or mildew attack, or any other cause reasonably beyond the control of ZEMPIRE® Camping Equipment are not covered.
4. If redress is sought under the terms of this Guarantee, then the product must be returned by the purchaser to the outlet from where it was purchased within the Guarantee period, in a clean, dry state and with proof of purchase.
5. All transport costs and any other indirect costs are excluded from the Guarantee.
6. ZEMPIRE® Camping Equipment reserves the right to make a reasonable charge for repairs which it determines are not within the scope of the Guarantee.
7. The Guarantee does not limit, modify or exclude any rights under any law if doing so would contravene that law or make any part of this Guarantee invalid. However, ZEMPIRE® Camping Equipment:
  - a) excludes (to the extent permitted by applicable law) all conditions and warranties that might otherwise be implied; and
  - b) limits its liability for breach of any such condition or Guarantee that it cannot exclude together with its liability under the Guarantee, to repairing or replacing the Goods or paying the cost of having the Goods repaired or replaced (at ZEMPIRE® Camping Equipment's option).

### **Australia Only**

Our goods come with guarantees that cannot be excluded under Australian Consumer Law. You are entitled to a replacement or refund for a major failure and compensation for any other reasonably foreseeable loss or damage. You are also entitled to have the goods repaired or replaced if the goods fail to be of acceptable quality and the failure does not amount to a major failure.

### **USA Only**

Some states do not allow the exclusion or limitation of incidental or consequential damages, so the above limitation or exclusion may not apply to you. This warranty gives you specific legal rights, and you may also have other rights which vary from State to State.

### **Europe Only**

The consumer has legal rights under applicable national legislation governing the sale of consumer goods and those rights are not affected by the guarantee.

All warranty claim processes are explained on our ZEMPIRE® website. Please go to [www.zempire.co.nz](http://www.zempire.co.nz), select your location and follow the instructions to lodge a warranty claim.

### **International Distributors:**

#### **New Zealand & Australia**

ZEMPIRE® Camping Equipment  
6 Karewa Place, Pukete,  
Hamilton, 3200, New Zealand  
Ph: +64 7 848 1610

#### **United Kingdom, Belgium, Netherlands & Luxembourg**

Outdoor & Sports Company Ltd.  
Redfern House, Dawson Street  
Hyde, Cheshire, SK14 1RD, UK  
Ph: +44 161 366 5020

#### **North America**

Outdoor & Sports Company Inc.  
610 Alden Road Unit 101  
Markham, ON, L3R 9Z1, Canada  
Ph: +1 905 940 9511

#### **Germany, Austria, & Switzerland**

Sport-tech  
Goldbeckstrasse 6  
69493 Hirschberg, Germany  
Ph: +49 6201 8439710

#### **South Korea**

Coldspin Corporation  
20 Gurodong-ro 15-gil  
Guro-gu, Seoul,  
South Korea  
Ph: +82 2 3397 7711

**Designed and tested in New Zealand. Made with care in China.**



AS PART OF OUR **ZEMPIRE FAMILY**, SHARE  
YOUR **CAMPING MOMENTS** ON SOCIAL



@zempirecamping #zempirefamily