

WARRANTY & CARE

5 Year Tent Guarantee

Please take time to read about the protection we offer you.

All our tents come with a guarantee designed to protect you as our valued customer. Flow Imports Ltd., the makers of ZEMPIRE® Camping Equipment tents, will repair or replace this tent, at their discretion, should it fail due to faulty materials or manufacture for a period of 5 years from the date of sale.

The Guarantee is subject to the following conditions:

1. The Guarantee only applies to an original purchaser who purchased this tent from an approved retail outlet.
2. The Guarantee does not apply if the tent has been used for anything other than reasonable personal camping use. Commercial use (e.g. rental) or continuous use as a residence are expressly excluded.
3. Damage due to normal wear and tear, accident, acts of God, negligence (other than by Flow Imports Ltd.), failure by the purchaser to ensure instructions for setting up and care are observed, deterioration due to abnormal exposure to ultraviolet light, insect or mildew attack, or any other cause reasonably beyond the control of Flow Imports Ltd. are not covered.
4. If redress is sought under the terms of this Guarantee, then the tent must be returned by the purchaser to the outlet from where it was purchased within the Guarantee period, in a clean, dry state and with proof of purchase.
5. All transport costs and any other indirect costs are excluded from the Guarantee.
6. Flow Imports Ltd. reserves the right to make a reasonable charge for repairs which it determines are not within the scope of the Guarantee.
7. The Guarantee does not limit, modify or exclude any rights under any law if doing so would contravene that law or make any part of this Guarantee invalid. However, Flow Imports Ltd.:
 - a) excludes (to the extent permitted by applicable law) all conditions and warranties that might otherwise be implied; and
 - b) limits its liability for breach of any such condition or Guarantee that it cannot exclude together with its liability under the Guarantee, to repairing or replacing the goods or paying the cost of having the goods repaired or replaced (at Flow Imports' option).

This tent has been made with meticulous care and attention to detail. Providing it's properly looked after and correctly stored, it will help you enjoy all that nature has to offer for years to come.

Care Instructions

1. Ensure guy ropes are out at all times during use.
2. Never pack your tent away wet. If you must take your tent down when wet, ensure that it is dried completely as soon as possible to prevent mildew forming.
3. If mildew does form on your tent, wash off with warm water and a soft brush to prevent further growth, do not use soap or detergents.
4. Do not use an open flame inside your tent. The fabric has been treated with a fire retardant but is in no way fire-proof.
5. Clean all pegs and poles before storing.
6. This tent is not designed to withstand storm conditions. During strong winds, it is recommended that the tent be taken down.
7. Do not leave your tent pitched unnecessarily for extended periods of time. UV light damages the fly and will shorten the life of your tent.

Get out more – you owe it to yourself!

For a detailed description of all the features and specifications of this product please visit our website.

WWW.ZEMPIRECAMPING.COM

Designed and tested in New Zealand. Made with care in China.

Zempire® CAMPING EQUIPMENT **DELTA FORCE** V2 AIR CANVAS SERIES

PITCHING INSTRUCTIONS



Zempire® CAMPING EQUIPMENT

PITCHING INSTRUCTIONS

1. Test Run

Practice pitching your tent at home to ensure you understand the process.

2. Pick A Site

When finding a site for your tent, try to find an area that is sheltered, flat, and free from sharp objects. If possible, position your tent with the front door facing away from the prevailing wind. Also, try not to pitch your tent under trees as falling branches can damage the tent and falling sap can damage the fabric.

3. Ground Sheet

To protect your tent from dirt and damage, it is recommended to use a ZEMPIRE® Ground Sheet. Ground Sheets not only protect your tent floor but also make pack down faster and cleaner. The Ground Sheet should be pegged down in the correct position first, then the tent placed on top. ZEMPIRE® Ground Sheets are slightly smaller than the size of the tent floor to ensure water does not collect between the two layers.

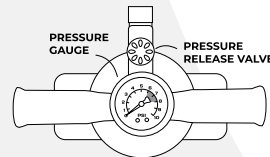
4. Unpacking

When you take your tent out for the first time, take a moment to see how it is packed or take a photo with your phone. This will help you when it comes to packing your tent away. Separate and identify the different parts included with your tent. The package should include the following:

- Tent
- Pressure release valve
- Pressure gauge
- Pump
- Pegs
- Guy Ropes (Pre-attached)
- Additional Guy Ropes

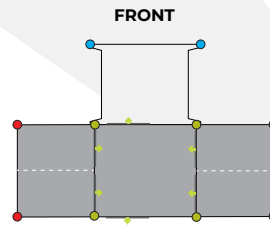
5. Pump Setup

Your ZEMPIRE® High Pressure Pump included with your tent comes with a pressure gauge and pressure release valve to ensure that the poles are inflated to the correct level. The pump accessories should be assembled in the following configuration:



6. Layout

Unroll the tent with the floor facing down. The awning is located at the front of the tent. Peg out the 4 corners of the central living area (●) ensuring there is significant tension between each point and that the floor sits as flat as possible. Next peg out the corner of each bedroom (●) and tension. Peg the front corners of your awning (●) so the attached guide straps sit taught and square. For best results, pegs should be angled away from your tent at 45°.

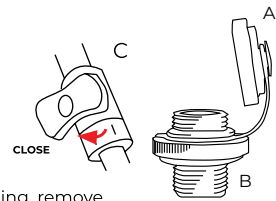


7. Airflow

To enable air to enter the tent during the pitching process, all window covers should be opened. It is important however that the doors remain closed during the pitching process to ensure the tent holds its correct shape during inflation and is not over tightened, causing damage.

8. Boston Valve and Air Release Taps

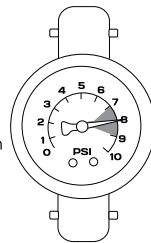
The external inflation valve is located at the rear of the tent. Before inflating, remove the valve cap (A) and screw the master valve (B) into the threaded section attached to the frame. Make sure the 5 air-release taps (C) at the rear of the tent, and the 2 taps (C) on the awning are closed off.



9. Inflation

Connect the pump to the Boston Valve and inflate to 7-9 PSI. The pressure-release valve will "hiss" when 9 PSI is reached. It is important not to over-inflate the tubes. It is recommended that during very hot weather 7 PSI is used to provide room for expansion during the day. In cooler or windier conditions 9 PSI is recommended.

As each pole inflates, it may be necessary to support the center of the pole until they assume their correct shape. It is also a good time to ensure that the base of each pole is



sitting correctly on the velcro patches of the tent floor, as poles can sometimes move off the velcro during the pitching process.

Once inflated, remove the pump and close the isolation taps inside the tent. These must be opened again before deflating the tent.

10. Setting the Floor

It may be necessary to align the base of each pole so that the floor sits flat and taught. You may also need to realign the corner pegging points so the floor sits flat. At this point it helps if the front door is completely closed when pegging out the front of the tent.

11. Pegging

Peg the remaining peg loops around the tent. Durable steel pegs are included with your tent which will be suitable for the majority of conditions. However, when camping at a rocky or loose sandy location, you may wish to purchase more specialised pegs. A range of specialised ZEMPIRE® Pegs are available.

12. Guy Ropes

Guy ropes are pre-attached on all ZEMPIRE® tents. It is recommended that guy ropes are used at all times. It is important not to over-tighten the guy ropes. They should sit taught but should not distort the shape of the tent.

13. Deflation

- Open all isolation taps inside the tent and awning.
- Unpeg all guy ropes and roll up to ensure they do not get tangled during packing.
- Unpeg all peg points except the four corners.
- Clean and dry pegs before storing in the bag.
- Open all 7 air release taps and wait for all the air to be expelled. These taps should remain open during the pack down process.
- Carefully walk over the air tubes (with shoes removed) to expel as much air as possible.
- Unpeg the four corners of the tent. Clean and pack the pegs.
- Fold the awning over the body of the tent, then fold the bedrooms over the center of the tent.
- Lay the carry bag at the rear of the tent and fold the tent to 2/3s of the length of the bag. The tent should be folded parallel to the main air tubes.
- Place the pump and peg bags on top of the folded tent at the end opposite the air release taps. Roll the tent from the "non-tap" side to the "tap-side" to help expel any remaining air from the frame. It may take more than one roll to expel all the air from the tent.
- Use the webbing compression straps to secure the rolled tent and place inside the carry bag.

Condensation

It is important that lower vents are opened at all times to reduce the risk of condensation. During humid or damp conditions, it is recommended that the waterproof door covers are opened to expose the mesh layer, enabling additional airflow throughout your tent.

Do not use foam swabs or non-bonded mats directly on the tent floor. This will cause condensation between the mat and floor and if not dried out, can lead to mildew forming.

Weathering Your Tent

When you first get your new tent, you will need to weather it. This is a process of soaking the fabric to ensure the cotton threads swell up, filling stitch holes and creating a watertight surface.

When you pitch your tent for the first time, soak the fabric with a garden hose until the fabric is visibly damp. Allow to dry and repeat two or three times.

Your tent will get more watertight the more you use it. Do not be concerned if you have a small amount of water coming through the seams on the first few times you get heavy rain.

Natural Fibre

ZEMPIRE® Canvas is made of a combination of natural cotton for breathability and water fastness and polyester for strength. Please note that as cotton is a natural fibre, you will notice variances of both colour and thickness of the thread. This is normal and is a characteristic of a natural and breathable fibre.

Fire Retardant

ZEMPIRE® Canvas Tents are naturally fire retardant. While this significantly reduces the risk of the fabric catching on fire, it is by no means fire-proof. Ensure open flames are kept well away from your tent at all times.